



Color

Body

Lid

manufactured by
Cervic Environment

METAL

PLASTIC

OUTDOOR

INDOOR

Easy Empty

45L

260 mm

750 mm

260 mm

6,9 kg

WASTE ADHESIVES
(all of them included in each bin)

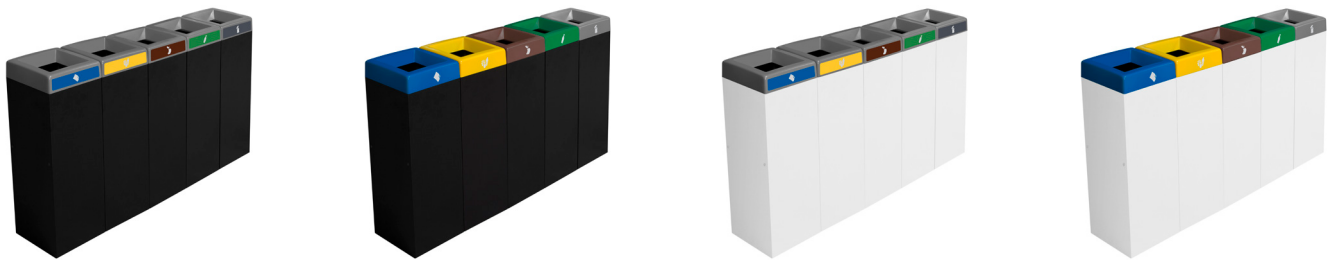


DETAIL

Bag replacement

Frontal Adhesive (accessory)

RECYCLING STATION EXAMPLES



- Economic bin that can be used as a single unit or forming recycling stations (joining kit included).
- Capacity 45L.
- Smart combination of metal body and plastic lid available in five colors (grey, green, yellow, blue and brown).
- Body available in black and white.
- Includes a set of adhesives with multiple combinable options of colors and waste symbols to be placed on the lid to identify the type of waste to be deposited.
- The bag is secured in place by the removable lid covering.
- With rubber feet.
- Can be fixed to the ground using 2 M6 expanding bolts (not included).
- Accessories: frontal adhesives, and bolts to fix the bin to the ground.
- Body made of 1 mm cold rolled steel plates which have been hot dip galvanized, with thermo-heating polyester powder coated finish.
- Lid made of plastic material (Polypropylene).
- Suitable to be used indoor and outdoor under normal weather conditions. In case of extreme weather conditions, such as high salinity, temperature or humidity, an additional special treatment can be included. Check extra cost and MOQ.
- Guaranteed reliability: this product has satisfactorily exceeded functionality and endurance tests under real environmental and usage conditions.

